

**Nucleostemin (GNL3) Antibody (C-term)**  
**Purified Rabbit Polyclonal Antibody (Pab)**  
**Catalog # AP1405b****Specification**

---

**Nucleostemin (GNL3) Antibody (C-term) - Product Information**

Application	IHC-P, WB,E
Primary Accession	<a href="#">Q9BVP2</a>
Reactivity	Human
Host	Rabbit
Clonality	Polyclonal
Isotype	Rabbit IgG
Calculated MW	61993
Antigen Region	458-487

**Nucleostemin (GNL3) Antibody (C-term) - Additional Information****Gene ID** 26354**Other Names**

Guanine nucleotide-binding protein-like 3, E2-induced gene 3 protein, Novel nucleolar protein 47, NNP47, Nucleolar GTP-binding protein 3, Nucleostemin, GNL3, E2IG3, NS

**Target/Specificity**

This Nucleostemin (GNL3) antibody is generated from rabbits immunized with a KLH conjugated synthetic peptide between 458-487 amino acids from the C-terminal region of human Nucleostemin (GNL3).

**Dilution**

IHC-P~~1:10~50

WB~~1:1000

E~~Use at an assay dependent concentration.

**Format**

Purified polyclonal antibody supplied in PBS with 0.09% (W/V) sodium azide. This antibody is prepared by Saturated Ammonium Sulfate (SAS) precipitation followed by dialysis against PBS.

**Storage**

Maintain refrigerated at 2-8°C for up to 2 weeks. For long term storage store at -20°C in small aliquots to prevent freeze-thaw cycles.

**Precautions**

Nucleostemin (GNL3) Antibody (C-term) is for research use only and not for use in diagnostic or therapeutic procedures.

**Nucleostemin (GNL3) Antibody (C-term) - Protein Information****Name** GNL3

**Synonyms** E2IG3, NS

**Function** May be required to maintain the proliferative capacity of stem cells. Stabilizes MDM2 by preventing its ubiquitination, and hence proteasomal degradation (By similarity).

**Cellular Location**

Nucleus {ECO:0000250|UniProtKB:Q811S9}. Nucleus, nucleolus. Note=Shuttles between the nucleus and nucleolus. {ECO:0000250|UniProtKB:Q811S9}

**Tissue Location**

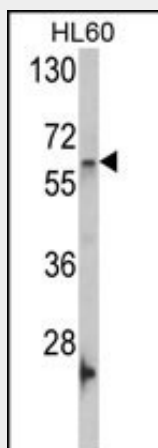
Increased levels in lung tissue in cancer patients.

**Nucleostemin (GNL3) Antibody (C-term) - Protocols**

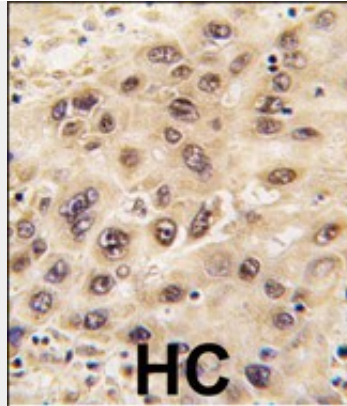
Provided below are standard protocols that you may find useful for product applications.

- [Western Blot](#)
- [Blocking Peptides](#)
- [Dot Blot](#)
- [Immunohistochemistry](#)
- [Immunofluorescence](#)
- [Immunoprecipitation](#)
- [Flow Cytometry](#)
- [Cell Culture](#)

**Nucleostemin (GNL3) Antibody (C-term) - Images**



Western blot analysis of GNL3 Antibody (C-term) (Cat. #AP1405b) in HL60 cell line lysates (35ug/lane). GNL3 (arrow) was detected using the purified Pab.



Formalin-fixed and paraffin-embedded human hepatocarcinoma tissue reacted with GNL3 antibody (C-term), which was peroxidase-conjugated to the secondary antibody, followed by DAB staining. This data demonstrates the use of this antibody for immunohistochemistry; clinical relevance has not been evaluated.

#### **Nucleostemin (GNL3) Antibody (C-term) - Background**

GNL3 is found in the nucleoli of embryonic stem cells, adult CNS stem cells, primitive cells in the bone marrow and cancer cells. It is not in the differentiated cells of most adult tissues. It has been suggested to play a role in controlling the cell-cycle progression in stem cells and cancer cells, and may be required to maintain the proliferative capacity of stem cells.

#### **Nucleostemin (GNL3) Antibody (C-term) - References**

Ma,H.,Mol. Biol. Cell 18 (7), 2630-2635 (2007)